



CITY OF DEWITT

DEWITT CITY HALL · 414 EAST MAIN STREET · DEWITT, MICHIGAN 48820

**CITY OF DEWITT
DEWITT CITY HALL
414 EAST MAIN STREET DEWITT MI 48820
Parks, Rec, Cemetery & Tree Commission Meeting Agenda
Wednesday, October 11, 2023 6:00 P.M.**

Call to Order

Approval of Agenda

Approval of Minutes August 9, 2023 Meeting Minutes

Public Comments

New Business

1.) Review and Select Playground Equipment for McGuire Park – Staff Report

Recommended Action: Review playground equipment options as discussed at the August 9, 2023 meeting for McGuire Park. A representative from Spicer will be in attendance with pricing.

Adjournment

Official minutes of the Parks, Recreation and Cemetery Commission Meetings are available for public inspection at the Clerk's Office, 414 East Main Street, DeWitt, Michigan 48820. The City of DeWitt will provide to individuals with disabilities, reasonable auxiliary aids and services which are needed to fully participate in any meeting provided a 72-hour notice is received by phone or in writing. Contact the City Clerk at 414 East Main Street, DeWitt, Michigan 48820 or by calling (517) 669-2441.

POSTED: OCTOBER 6, 2023

City of DeWitt
Parks, Recreation, Cemetery and Tree Commission
DeWitt City Hall 414 East Main Street
Wednesday, August 9, 2023
6:00 P.M.

CALL TO ORDER:

Chair Donohue called the August 9, 2023, Parks, Recreation, Cemetery and Tree Commission Special Meeting to order at 6:03 P.M.

ROLL CALL:

Present: Commissioners Donohue, Lenneman, Costigan

Absent: Ladd

Staff: Daniel Coss, City Administrator

AUDIENCE: Tanya Moore, Spicer Group

APPROVAL OF AGENDA:

Motion by Commissioner Lenneman, supported by Commissioner Costigan to approve the agenda for August 9, 2023. **MOTION CARRIED UNANIMOUSLY.**

APPROVAL OF MINUTES:

Motion by Commissioner Lenneman, supported by Commissioner Costigan to approve the meeting minutes for June 7, 2023. **MOTION CARRIED UNANIMOUSLY.**

PUBLIC COMMENTS: None

OLD BUSINESS: None

NEW BUSINESS

1.) **Review and select playground equipment for McGuire Park**

The Commission reviewed several different types of climbing equipment for McGuire Park.

Tanya Moore, Spicer Group, went over different layouts and designs with cost estimates that would fit in the playground area in the park.

After a brief discussion the commission requested Spicer Group get quotes of updated playground equipment based on the discussions with the Commission and to get pricing for the final design; adding Quantis M.2, Mobius 2.0 and two (2) spinners. The color pattern of blue and yellow was determined to be the best fit for McGuire Park.

Meeting adjourned at 6:45 P.M.

Respectfully Submitted,
Daniel Coss, Recording Secretary

Staff Report for
Parks, Recreation, Cemetery & Tree Commission

Agenda Item: NB #1
Meeting Date: October 11, 2023

TO: Parks, Recreation, Cemetery and Tree Commissioners

FROM: Dan Coss, City Administrator

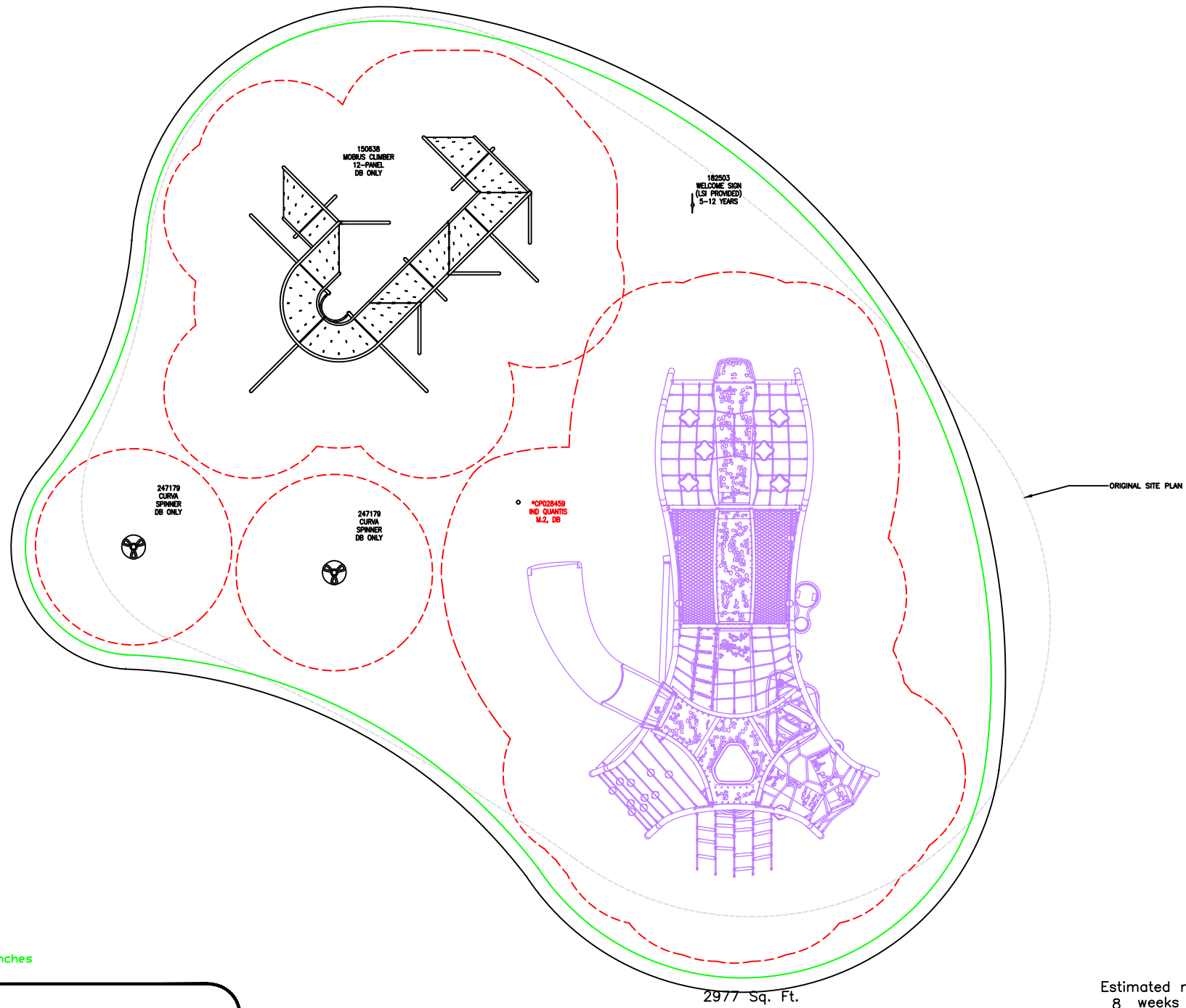
DATE: October 6, 2023

SUBJECT: McGuire Park Playground Equipment Selection

FACTS: Attached are the final designs based on the conversations the commission had at the last meeting.

Included in the packet are several renderings from different angles and an overall layout of the equipment.

RECOMMENDED ACTION: Review final design of playground equipment options as discussed at the August 9, 2023 meeting for McGuire Park and make a recommendation to City Council.



Freestanding Play
(5-12 years)
Max Fall Height: 120 inches

TOTAL ELEVATED PLAY COMPONENTS	2		
TOTAL ELEVATED COMPONENTS ACCESSIBLE BY RAMP	0	REQUIRED	0
TOTAL ELEVATED COMPONENTS ACCESSIBLE BY TRANSFER	1	REQUIRED	1
TOTAL ACCESSIBLE GROUND LEVEL COMPONENTS SHOWN	6	REQUIRED	1
TOTAL DIFFERENT TYPES OF GROUND LEVEL COMPONENTS	4	REQUIRED	4

Estimated manufacturing time:
8 weeks from the time of
LSI order acceptance, or receipt of
SkyWays release of fabrication
form if applicable.

LSI
landscape
structures



The play components identified on this plan are IPEMA certified. (Unless model number is preceded with *) the use and layout of these components conform to the requirements of ASTM F1487. To verify product certification, visit www.ipema.org

THIS PLAY AREA & PLAY EQUIPMENT IS DESIGNED FOR AGES 5-12 YEARS UNLESS OTHERWISE NOTED ON PLAN.

IT IS THE MANUFACTURERS OPINION THAT THIS PLAY AREA DOES CONFORM TO THE A.D.A. ACCESSIBILITY STANDARDS, ASSUMING AN ACCESSIBLE PROTECTIVE SURFACING IS PROVIDED, AS INDICATED, OR WITHIN THE ENTIRE USE ZONE.

THIS CONCEPTUAL PLAN WAS BASED ON INFORMATION AVAILABLE TO US. PRIOR TO CONSTRUCTION, DETAILED SITE INFORMATION INCLUDING SITE DIMENSIONS, TOPOGRAPHY, EXISTING UTILITIES, SOIL CONDITIONS, AND DRAINAGE SOLUTIONS SHOULD BE OBTAINED, EVALUATED, & UTILIZED IN THE FINAL DESIGN. PLEASE VERIFY ALL DIMENSIONS OF PLAY AREA, SIZE, ORIENTATION, AND LOCATION OF ALL EXISTING UTILITIES, EQUIPMENT, AND SITE FURNISHINGS PRIOR TO ORDERING. SLIDES SHOULD NOT FACE THE HOT AFTERNOON SUN.

CHOOSE A PROTECTIVE SURFACING MATERIAL THAT HAS A CRITICAL HEIGHT VALUE TO MEET THE MAXIMUM FALL HEIGHT FOR THE EQUIPMENT (REF. ASTM F1487 STANDARD CONSUMER SAFETY PERFORMANCE SPECIFICATION FOR PLAYGROUND EQUIPMENT FOR PUBLIC USE, SECTION 8 CURRENT REVISION). THE SUBSURFACE MUST BE WELL DRAINED. IF THE SOIL DOES NOT DRAIN NATURALLY IT MUST BE TILED OR SLOPED 1/8" TO 1/4" PER FOOT TO A STORM SEWER OR A "FRENCH DRAIN".

AREA OF ACCESSIBLE/PROTECTIVE SURFACING (POURED-IN-PLACE SUGGESTED)

DESIGNED BY:
IL

COPYRIGHT: 9/20/23
LANDSCAPE STRUCTURES, INC.
601 7th STREET SOUTH - P.O. BOX 198
DELANO, MINNESOTA 55328
PH: 1-800-328-0035 FAX: 1-763-972-6091

Date	Previous Drawing #	Initials

SCALE IN FEET:



McGuire Park
DeWitt, MI

Penchura, L.L.C.
Tim Sheffer

SYSTEM TYPE:
Freestanding

DRAWING #:
1179003-02-01





McGuire Park



1179003-02-01-02 • 09.20.2023

©2023 Landscape Structures. All Rights Reserved.



McGuire Park

1179003-02-01-03 • 09.20.2023





McGuire Park

1179003-02-01-04 • 09.20.2023





McGuire Park



1179003-02-01-01 • 09.20.2023

©2023 Landscape Structures. All Rights Reserved.